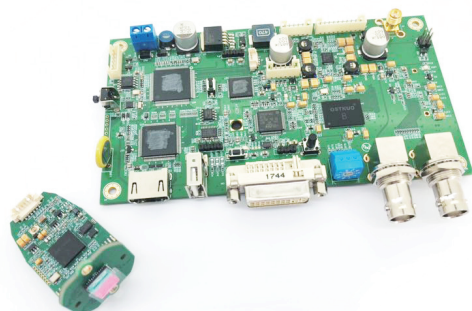




## 1/2.8" Φ26mm 60fps 1080P medical endoscope module

Model: OS-HD286026-M802



### Features

- 2Mega 1/2.8" CMOS sensor
- 1080P @ 60fps HD resolution, be compatible with 1080P and 720P all kinds of image output forma
- Support USB2.0 hard compress recording,max support 128G capacity
- Support DVI/HDMI/VGA/CVBS and loop SDI output at the same time
- Support key AWC and screen freeze function, AWC correction has memory function when power is off
- Support RS485 function
- Support mulit-language menu
- 3G-SDI,HD-SDI and EX-SDI digital signal transmission
- Front end calorific value is low and the working temperature could be controlled below 40°C when install the handle

### Camera Parameters

Synchronization	Inner synchronization	
Resolution	Digital:1080(60P),720(120P) Max:1100TVL(1080P)	
Luminance S/N	More Than 50dB (AGC Off)	
Min. Illumination	Color:1Lux B/W:0.5Lux	
Video Output Signal	Digital: 3G-SDI, Analog: NTSC/PAL CVBS	
OSD Display	Available	
FUNCTION	Lens	Manual
	Shutter Speed	AUTO / Manual(1/60 ~ 1/60,000(NTSC), 1/50 ~ 50,000(PAL))
	Gain Control	0~10 Steps
	Digital Slow Shutter	Off / On(X2 / X4 / X8 X16 / X32 / X64)
	Brightness	0~20 Steps
	WDR / BLC	Off / BLC / HLC / WDR
	Color	0~20
	Contrast	Low / Middle / High
	White Balance	Auto / Auto EXT / Pushing / Manual
	Gamma	0.45~0.75
	Mirror / Flip	Off / On
	Sharpness	0~10Steps
	B/R-Gain	0~55
	Digital Zoom	0~96 Steps
	RS-485	Support 2400 ~ 115200 Baud
	language	English / Chinese
	Reset	Off / On
	Power Consumption	DC12V Max 2.5W
Dimensions	φ26 *1.2mm ( T )	

### Board Parameters

Input	3G-SDI	
Output	DVI / HDMI / VGA / SDI / CVBS	
	DC +10.8V~+13.2V	
PORT	DC Jack	PIN1" + " PIN2" -"
	Camera Jack	10PH2.0mm Connector
	SDI Input	75Ω , SMA
	SDI Output	75Ω , BNC-F
	DVI /HDMI	DVI /HDMI Connector
	VGA	6PH2.0mm Connector
	USB Storage	FAT32(Max 128G)
	Red LED	Power ON
	Green LED	SDI Lock
	KEY	6PH2.0mm Connector
Mode SW	10 Level Converter	
UART1	4PH1.25mm Connector	
UART2	4PH1.25mm Connector	
Power Consumption	Max 5.0W	
PCB Dimensions	150mm X 80mm	
Operating Temperature	-10~+50°C	
Operating Humidity	5~90%RH	
Adapter	Input : AC 110~240V,Output : DC +12V/2A	